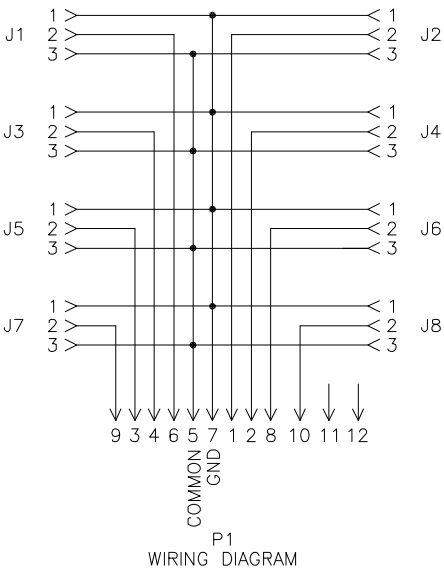
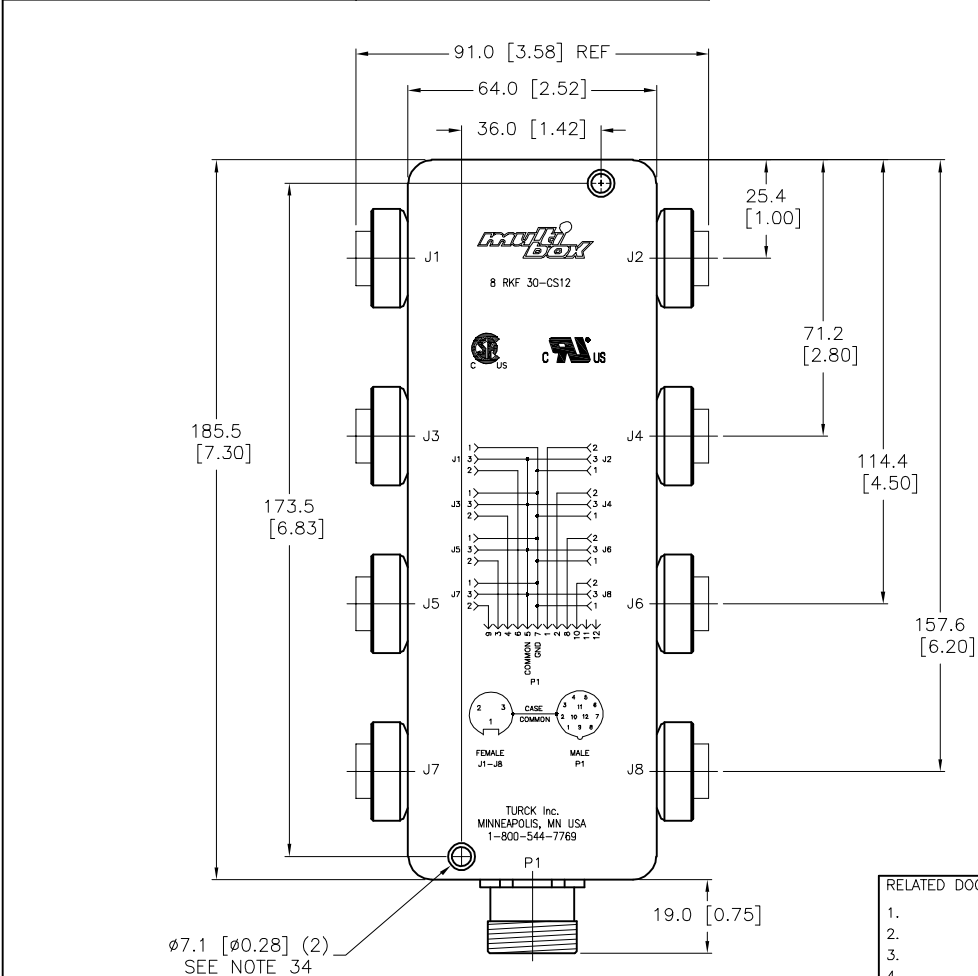


SPECIFICATIONS	
CONTACT CARRIER MATERIAL/COLOR	NYLON OR TPU/BLACK
CONTACT MATERIAL/PLATING	BRASS/GOLD
COUPLING NUT MATERIAL/PLATING	BRASS/NICKEL
HOUSING MATERIAL	ALUMINUM ALLOY
RATED CURRENT [A]	4 A PER PORT, 8.0 A TOTAL
RATED VOLTAGE [V]	250 VAC/300 VDC
TEMPERATURE RANGE	-40°C to +105°C (-40°F to +221°F)
PROTECTION CLASS	MEETS IEC IP67



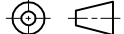

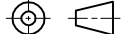
SOURCE DRAWING - FOR REFERENCE ONLY

NOTES:

1. BOX HEIGHT IS 1.36 [34.5] NOMINAL.

2. CLEARANCE HOLE FOR M4 [#8] MOUNTING SCREWS (2 NOT INCLUDED).

E	UPDATED HOLE LENGTH TO 36.0	ER	09/03/21	77005
REV	DESCRIPTION	BY	DATE	ECO. NO.

RELATED DOCUMENTS 1. 2. 3. 4.	3RD ANGLE PROJECTION		THIS DRAWING IS CONFIDENTIAL AND THE PROPERTY OF TURCK INC. USE OF THIS DOCUMENT WITHOUT WRITTEN PERMISSION IS PROHIBITED.	 <div>3000 CAMPUS DRIVE MINNEAPOLIS, MN 55441 1-800-544-7769 (763) 553-7300 (763) 553-0708 fax www.turck.us</div>			
MATERIAL SEE SPECIFICATIONS	ALL DIMENSIONS DISPLAYED ON THIS DRAWING ARE FOR REFERENCE ONLY		DRFT	RJP	DATE	06/21/95	DESCRIPTION 8 RKF 30-CS12
FINISH SEE SPECIFICATIONS			APVD		SCALE	1=2.0	
	CONTACT TURCK FOR MORE INFORMATION	<div>UNIT OF MEASUREMENT</div> <div>MILLIMETER [INCH]</div>	<div>IDENTIFICATION NO.</div> <div>U2910</div> <div>REV</div> <div>E</div>				
<div>DO NOT SCALE THIS DRAWING</div>							
		<div>FILE: U2910</div>					<div>SHEET 1 OF 1</div>